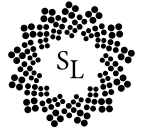




SL02 IN LINE LIGHT



FEATURES AND SPECIFICATIONS SHEET FOR THE SL02



FIXTURE: INTERGRATED IN LINE LIGHT		
NAME: SL02	TYPE: INTEGRATED LOW VOLTAGE LED	WEIGHT: 1.5LBS
BEAM ANGLE: 140° (WIDTH)	OPERATING VOLTAGE: 9V - 15V AC	WATTAGE: 0.8W
COLOR TEMP: 2700K/3000K	WIRE LEAD: 15' 18AWG	LUMEN OUTPUT: 60LM

INTENDED USE

The SL02 is the ideal solution for landscape lighting professionals to accent countertops, steps, seating walls, retaining walls, edges, and more. Offering powerful lighting in a compact size, the SL02 In Line Light is ideal for applications needing unobtrusive lighting. The thin, built-in mount disappears into the fixture allowing the light to be installed almost anywhere, including stacked stone.

CONSTRUCTION

The exterior casing is crafted from marine-grade, virgin brass with a beautiful antique finish. The mounting bracket is thin, durable stainless steel with three mounting options for new construction, post construction, and deck mounting. This fixture is also designed to hide 3.5" of wire for easy access and flush mount installation.

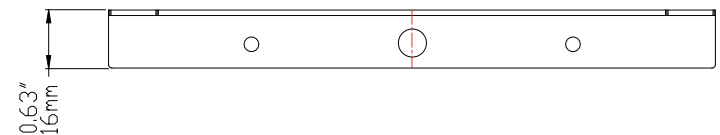
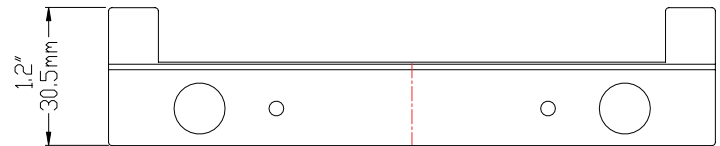
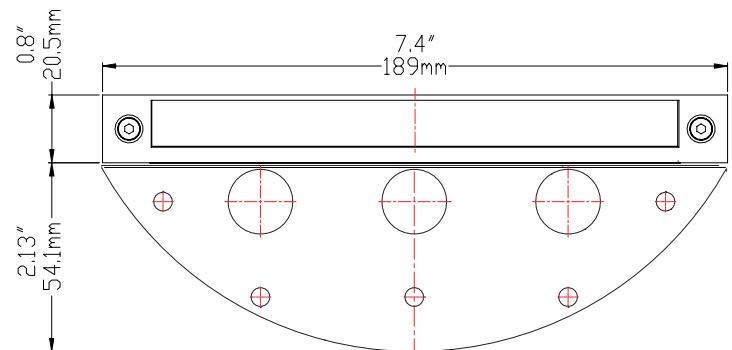
ELECTRICAL SYSTEM

All electronic drivers comply with US and Canadian electrical codes.

LISTING

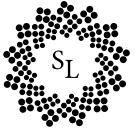
RoHS, IP66 rated.

Note: Perfectly even light distribution using our patent pending LED technology.



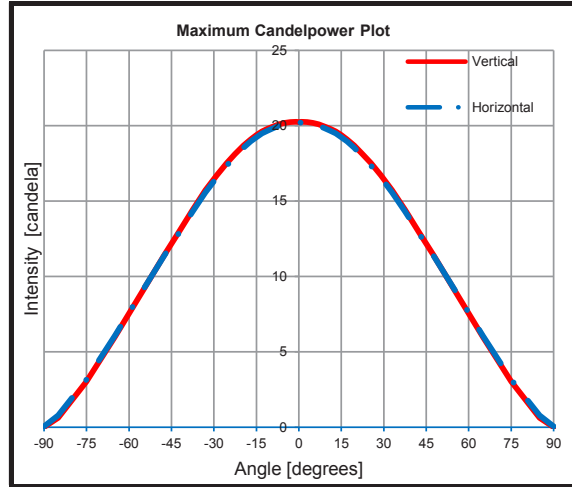


Sterling Lighting LLC
SL02 In Line Light



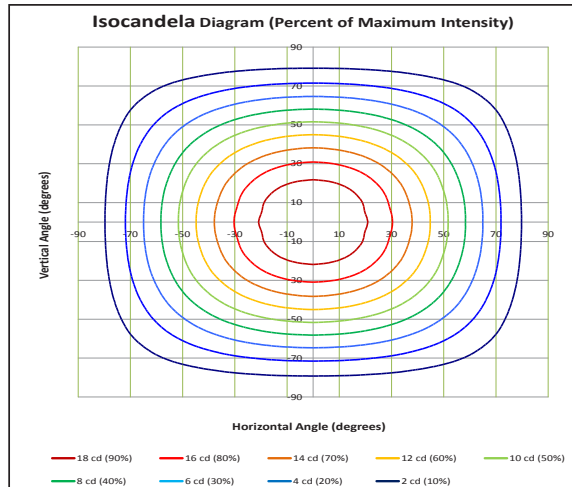
Electrical Test Conditions						
Temp	Voltage	Current	Power	Power Factor	Frequency	Current THD
24.7 °C	14.02 VAC	0.1327 A	1.050 W	0.565	60 Hz	138 %

Summary of Results	
Integrating Sphere	
Total Lumen Output	52.3 lm
Luminaire Efficacy	49.9 lm/w
CCT	3276 K
CRI	82.9
Duv	0.0043
TM-30 Rf	84.0
TM-30 Rg	95.9

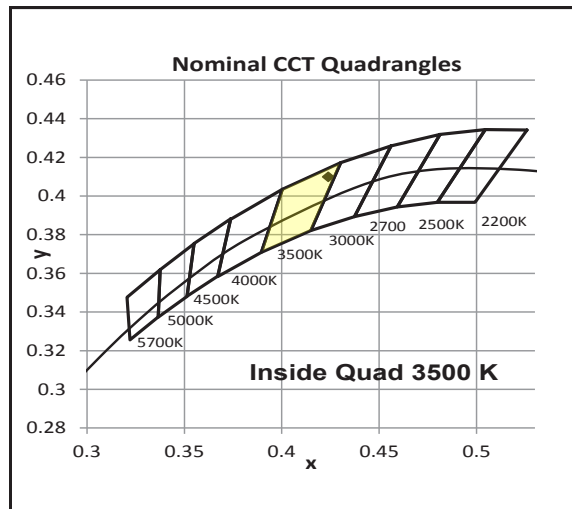


Intensity (Candlepower) Summary		
Angle	Vertical	Horizontal
-85	1	1
-75	3	3
-65	6	6
-55	9	9
-48	11	11
-43	13	13
-38	14	14
-33	16	16
-29	17	17
-26	18	17
-23	18	18
-20	19	19
-17	19	19
-15	19	19
-13	20	19
-11	20	20
-9	20	20
-7	20	20
-5	20	20
-3	20	20
0	20	20
3	20	20
5	20	20
7	20	20
9	20	20
11	20	20
13	20	19
15	19	19
17	19	19
20	19	19
23	18	18
26	18	17
29	17	17
33	16	16
38	14	14
43	13	13
48	11	11
55	9	9
65	6	6
75	3	3
85	1	1

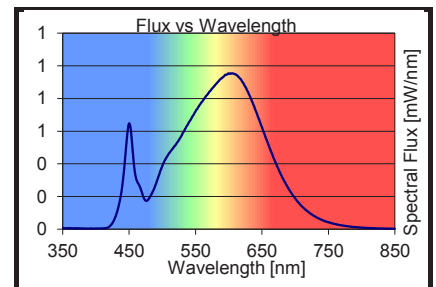
Goniophotometer	
Maximum Candela	20 cd
Location of Max	-1 H -1 V
Total Lumen Output	53 lm
Field Lumens	52 lm
Beam Lumens	37 lm
Spill Light Lumens	1 lm
Field Angle	159.5 H X 158.4 V
Beam Angle	103.3 H X 103.2 V
IESNA Type	7 H X 7 V



Color Rendering Index Details	
Ra (CRI)	82.9
R1	80.6
R2	88.2
R3	95.2
R4	81.9
R5	80
R6	84.1
R7	87.7
R8	65.6
R9	15.7
R10	72.5
R11	79.9
R12	62.7
R13	81.9
R14	97.1



Chromaticity Coordinates	
Chromaticity (x)	0.4239
Chromaticity (y)	0.4099
Chromaticity (u)	0.2398
Chromaticity (v)	0.3478
Chromaticity (u')	0.2398
Chromaticity (v')	0.5217
Duv	0.0043



Testing was performed in accordance with LM-79-08
The results contained in this summary pertain only to report #12305664.02

WHY THE SL02 OUTSHINES THE COMPETITION



- Constructed of marine-grade virgin brass. Feel, see, experience the difference!
- Includes standard 15' wire lead to minimize the length of connection needed, simplifying installations.
- Constructed with 18 high-quality Samsung 5630 LED chips.
- Completely sealed fixture with an IP66 rating.
- Multiple mounting brackets to allow installation for both new construction and post construction applications.
- Versatile design easily allows this popular fixture to function as a hand-rail light.
- Designed for flush mount application and easy wire access utilizing an embedded wire channel.
- Ongoing research and development, staying a step ahead of the competition.