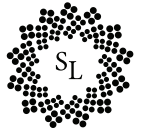




SL07P PINNACLE PATH LIGHT





FEATURES AND SPECIFICATIONS SHEET FOR THE SL07P

FIXTURE: DEDICATED LED PATH LIGHT		
NAME: SL07P	TYPE: DEDICATED LOW VOLTAGE LED	WEIGHT: 6LBS
LIGHT SPREAD: 13FT-16FT	OPERATING VOLTAGE: 9V -15V AC	WATTAGE: 4.2W
COLOR TEMP: 3000K	WIRE LEAD: 10' 18AWG	LUMEN OUTPUT: 450LM

INTENDED USE

With the same brilliance and construction as our classic path light, the SL07P Pinnacle Light offers additional style and elegance. This fixture is ideal for illuminating walkways, driveways, garden beds, and more. Over time, the untreated brass tip on the cap of the fixture is designed to age naturally and patina.

CONSTRUCTION

The exterior casing is crafted from marine-grade, virgin brass with a beautiful antique finish. All pieces are threaded together for additional strength. The ground mount is constructed of thick ABS plastic to ensure the fixture stays in place, year after year. Quality materials and our expert design make the SL07P beautiful in aesthetic and durable in application.

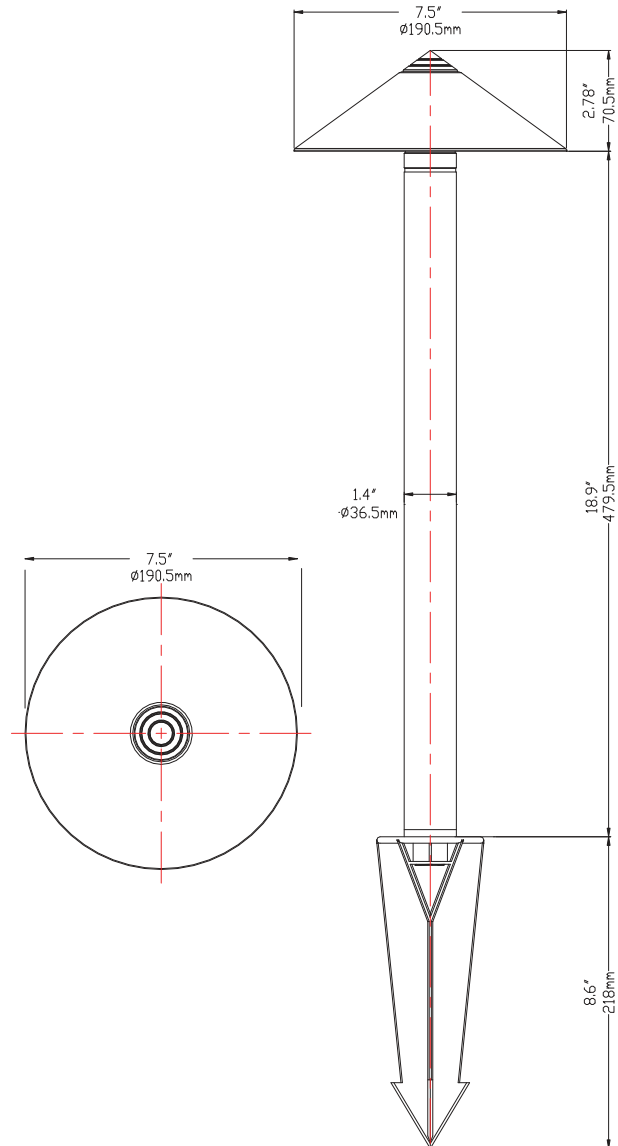
ELECTRICAL SYSTEM

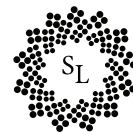
All electronic drivers comply with US and Canadian electrical codes. Easy replacement of driver and LED cup if service is needed.

LISTING

ETL 5003824, UL1838, RoHS rated.

Note: Patent pending driver technology using CREE CXB chip.





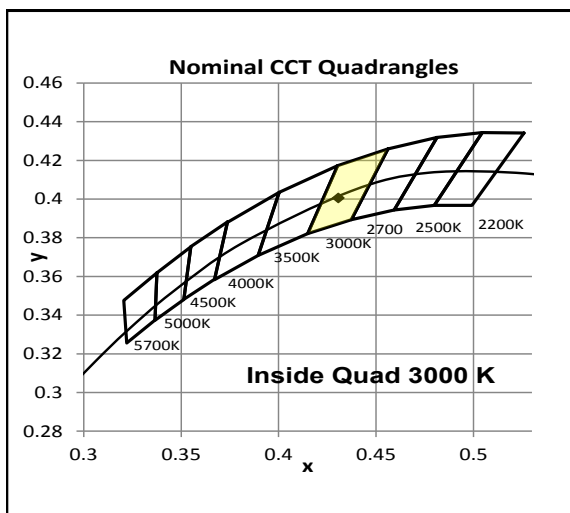
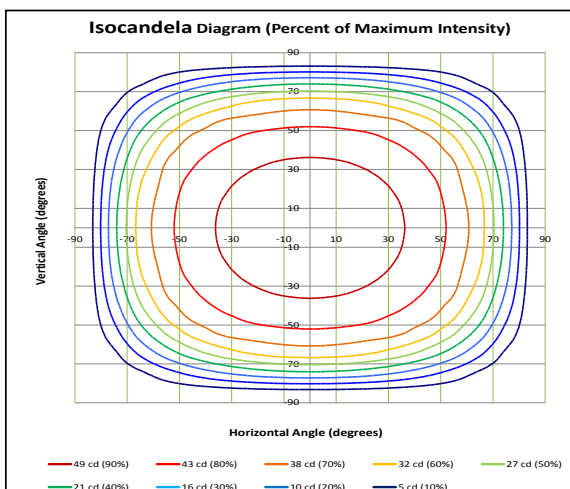
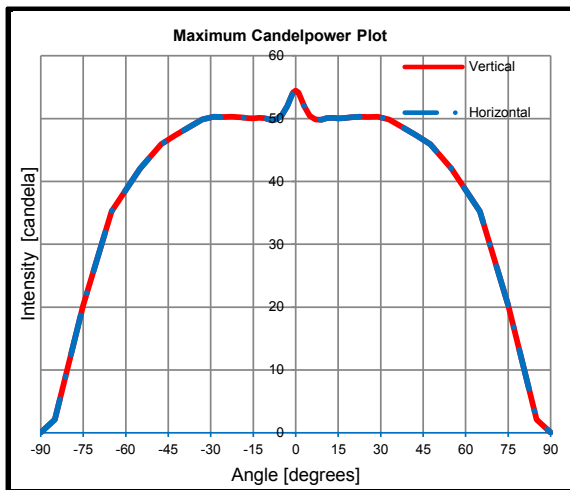
Electrical Test Conditions						
Temp	Voltage	Current	Power	Power Factor	Frequency	Current THD
24.7 °C	14.00 VAC	0.5923 A	5.077 W	0.612	60 Hz	125 %

Summary of Results	
Integrating Sphere	
Total Lumen Output	203.8 lm
Luminaire Efficacy	40.2 lm/w
CCT	3077 K
CRI	86.6
Duv	-0.0005
TM-30 Rf	85.6
TM-30 Rg	99.1

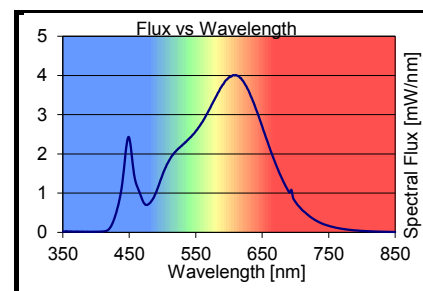
Goniophotometer	
Maximum Candela	54 cd
Location of Max	0 H 0 V
Total Lumen Output	206 lm
Field Lumens	205 lm
Beam Lumens	186 lm
Spill Light Lumens	1 lm
Field Angle	166.3 H X 166.3 V
Beam Angle	140.7 H X 140.7 V
IESNA Type	7 H X 7 V

Color Rendering Index Details	
Ra (CRI)	86.6
R1	85.6
R2	92.0
R3	97.1
R4	86.4
R5	85.8
R6	90.4
R7	86.8
R8	68.4
R9	26.9
R10	81.7
R11	87.1
R12	76.0
R13	87.1
R14	98.4

Chromaticity Coordinates	
Chromaticity (x)	0.4307
Chromaticity (y)	0.4006
Chromaticity (u)	0.2480
Chromaticity (v)	0.3461
Chromaticity (u')	0.2480
Chromaticity (v')	0.5191
Duv	-0.0005



Intensity (Candlepower) Summary		
Angle	Vertical	Horizontal
-85	2	2
-75	20	20
-65	35	35
-55	42	42
-48	46	46
-43	47	47
-38	49	49
-33	50	50
-29	50	50
-26	50	50
-23	50	50
-20	50	50
-17	50	50
-15	50	50
-13	50	50
-11	50	50
-9	50	50
-7	50	50
-5	50	50
-3	52	52
0	54	54
3	52	52
5	50	50
7	50	50
9	50	50
11	50	50
13	50	50
15	50	50
17	50	50
20	50	50
23	50	50
26	50	50
29	50	50
33	50	50
38	49	49
43	47	47
48	46	46
55	42	42
65	35	35
75	20	20
85	2	2



Testing was performed in accordance with LM-79-08
 The results contained in this summary pertain only to report #12305664.04

*This photometric report was completed on the SL07 Path Light, which has the same electrical components as the SL07P Pinnacle Light.

WHY THE SL07P OUTSHINES THE COMPETITION



- Constructed of marine-grade, virgin brass. Feel, see, experience the difference!
- Includes standard 10' wire lead to minimize the length of connection needed, simplifying installations.
- Constructed with high quality CREE LED chips. CREE is the leading LED source provider in the world.
- This quality fixture weighs 6lbs.
- Elegant design that blends into any landscape providing a 16' spread of light.
- Smarter design that complies with IDA guidelines to minimize light pollution.
- Ongoing research and development, staying a step ahead of the competition.